

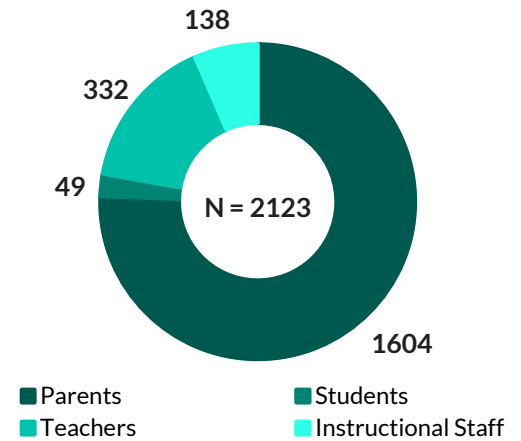
Survey Overview

In June 2020, Hanover Research administered the **COVID-19 Extended School Closure Impact Survey** on behalf of Brandywine School District. Parents, students, teachers, and instructional staff members responded to questions which inquired about their perceptions of:

- Access to district and school resources before and during COVID-19 related school closures;
- The effects of lost in-person instructional time on academic readiness and student wellbeing;
- Activities and resources to support distance learning; and
- District and school communications.

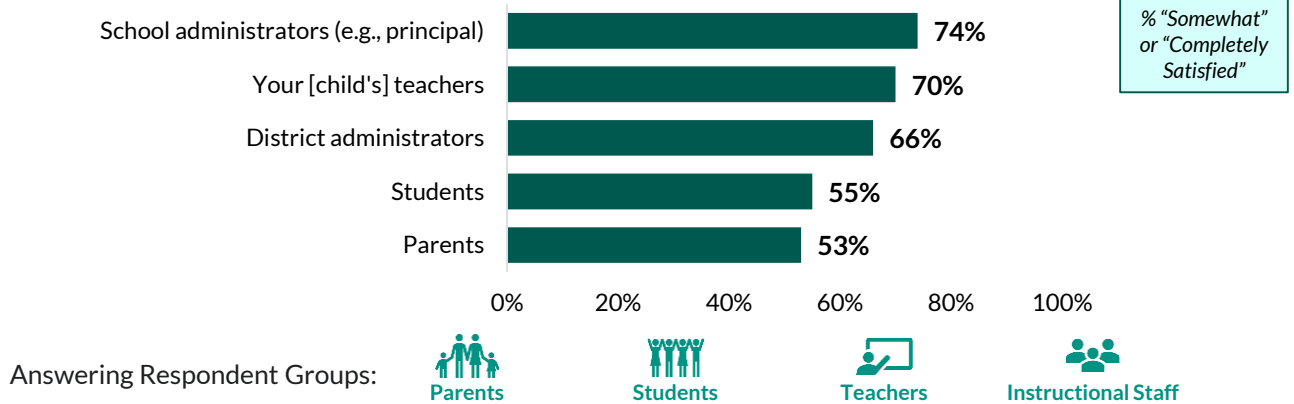
Collected results can inform planning efforts for the 2020-21 school year.

Respondent Sample



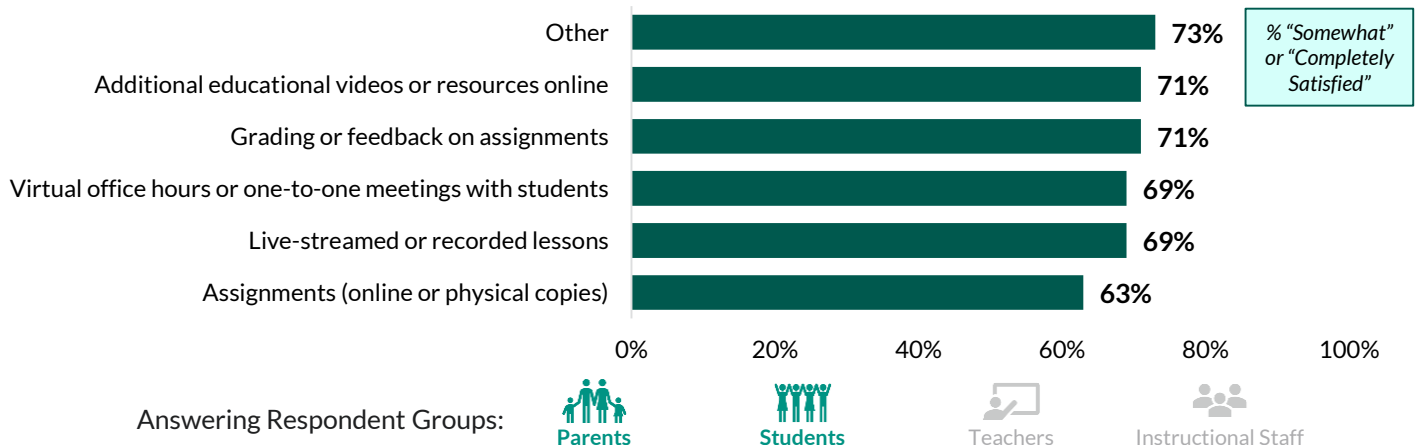
Satisfaction with Communications

Question: How satisfied are you with the communication you've received from the following individual(s) since the beginning of the COVID-19 crisis? (all respondent groups)



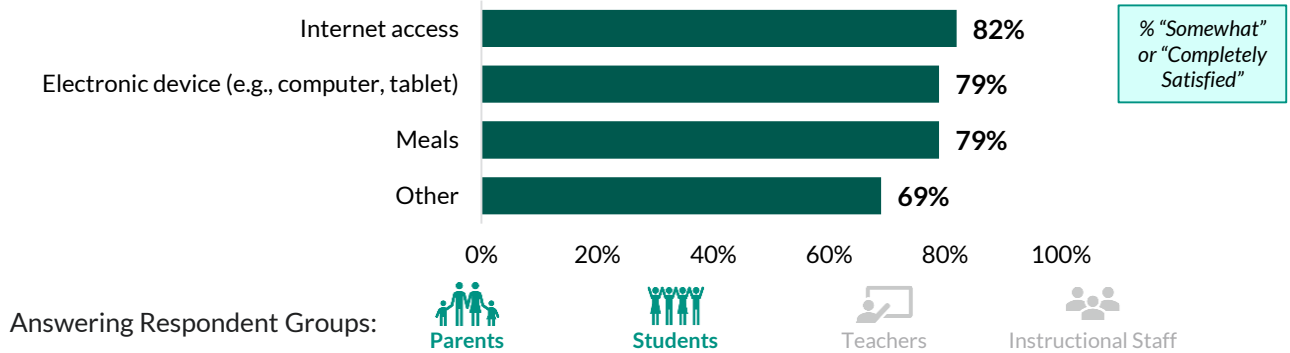
Satisfaction with Teacher-Provided Resources

Question: How satisfied are you with the following resource(s) provided by your [child's] teacher(s)? (parents and students)

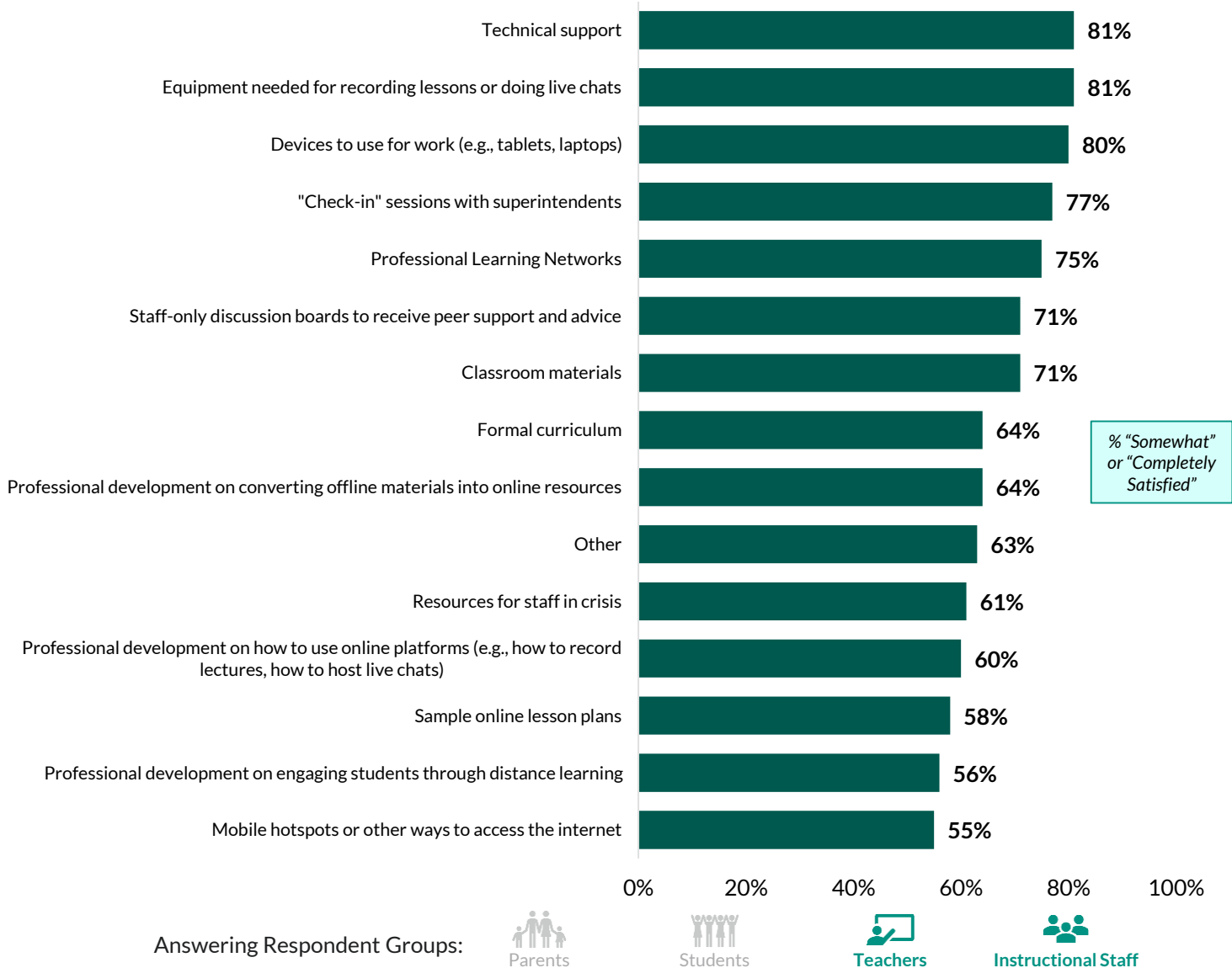


Satisfaction with District/School-Provided Resources

Question: How satisfied are you with the following resource(s) provided by your [child's] school/district? (parents and students)

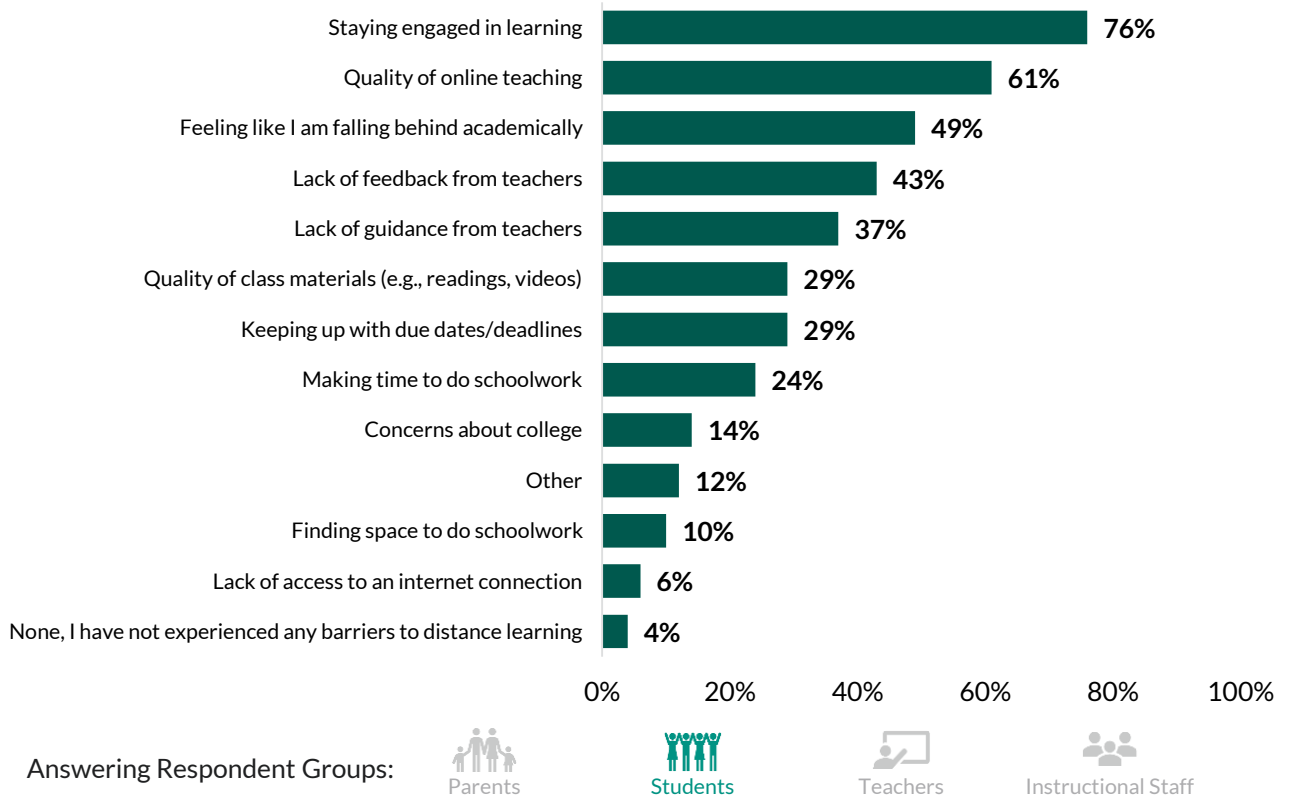


Question: Please indicate your level of satisfaction with the following: (teachers and instructional staff)

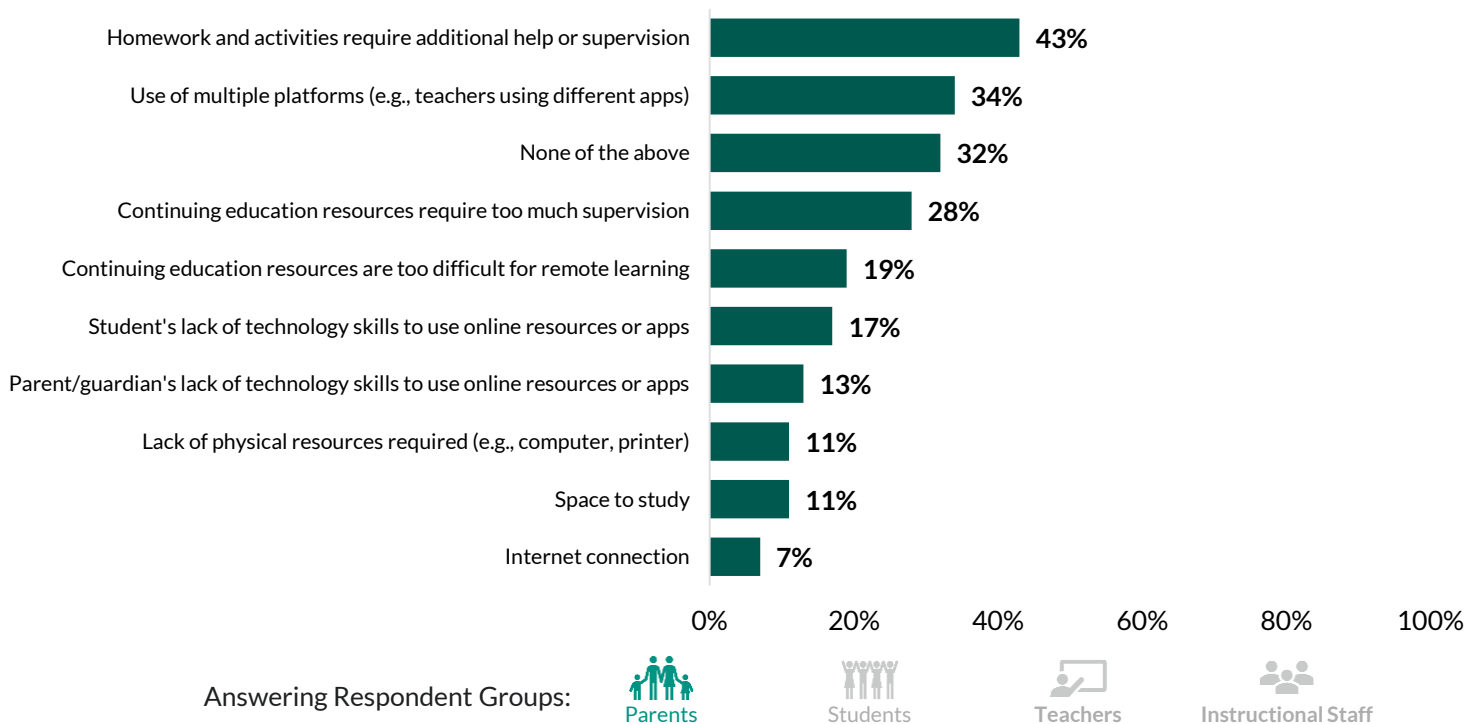


Reported Challenges During Distance Learning

Question: Which of the following have been the biggest academic challenges related to the move to distance learning? (students)

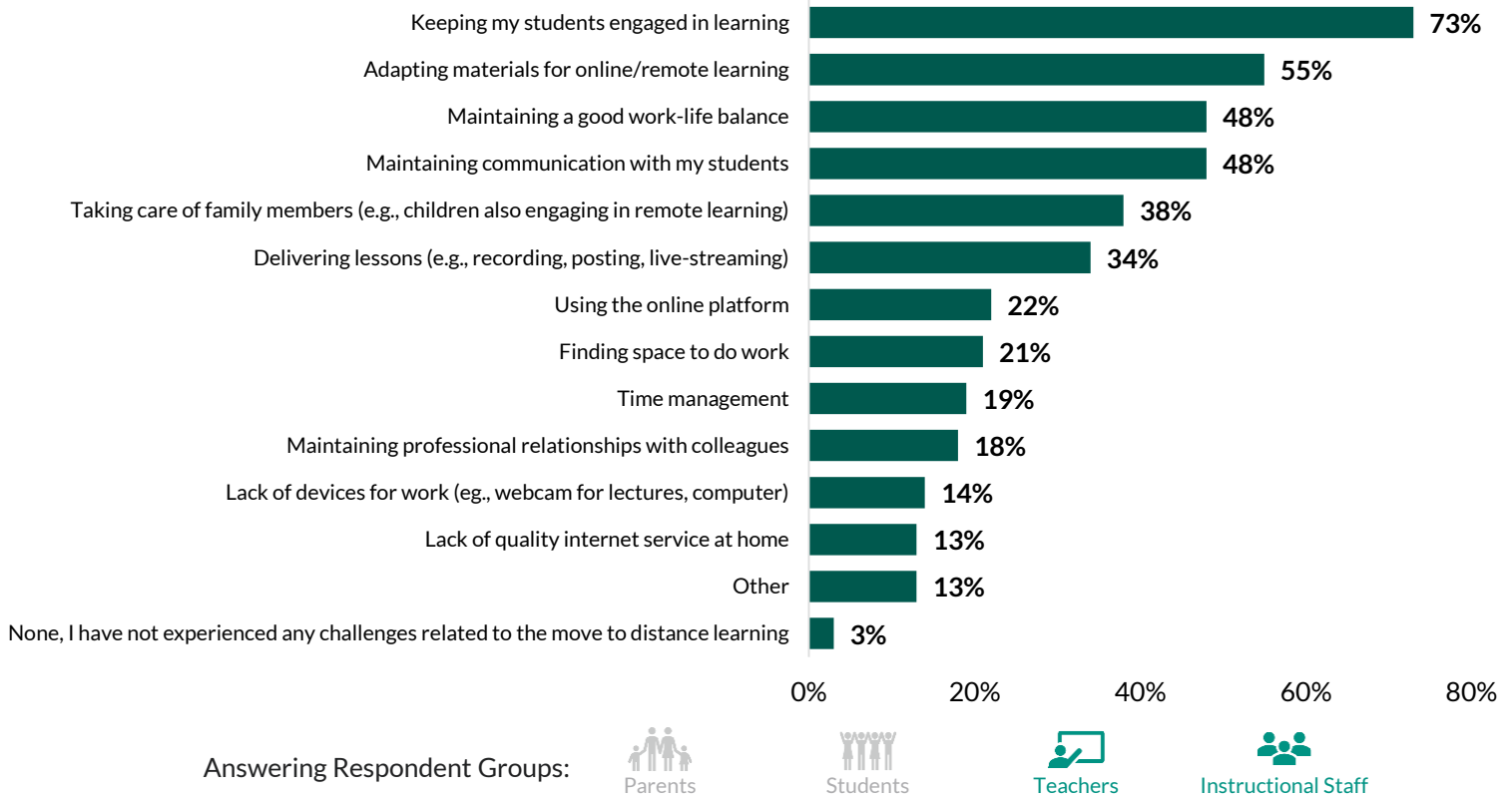


Question: Which of the following barriers to your child's continuing education during school closures have you experienced? (parents)



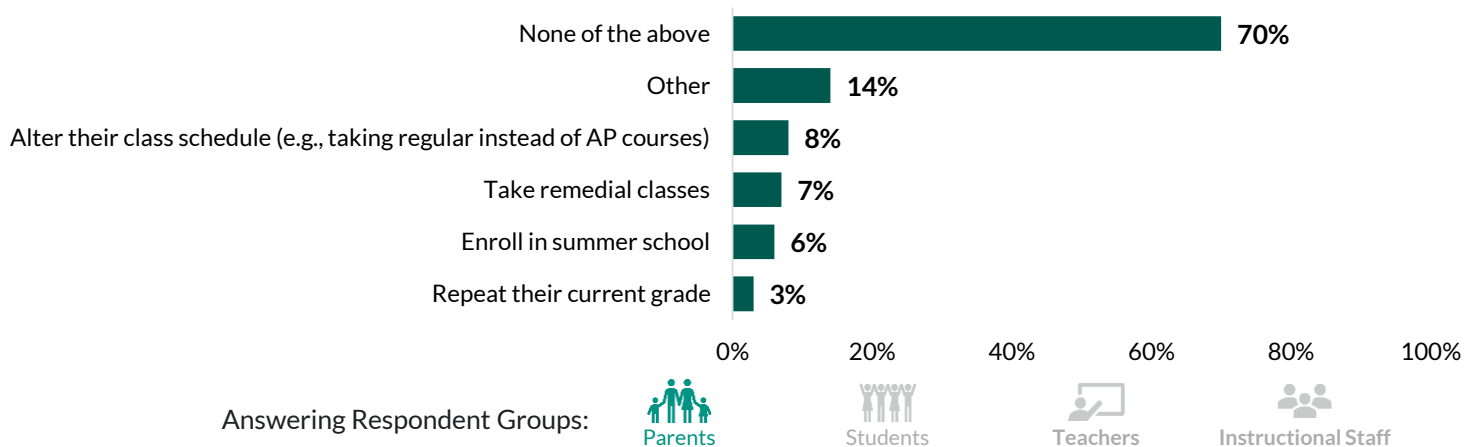
Reported Challenges During Distance Learning (continued)

Question: Which of the following have been your biggest professional challenges related to the move to distance learning and working remotely? (teachers and instructional staff)



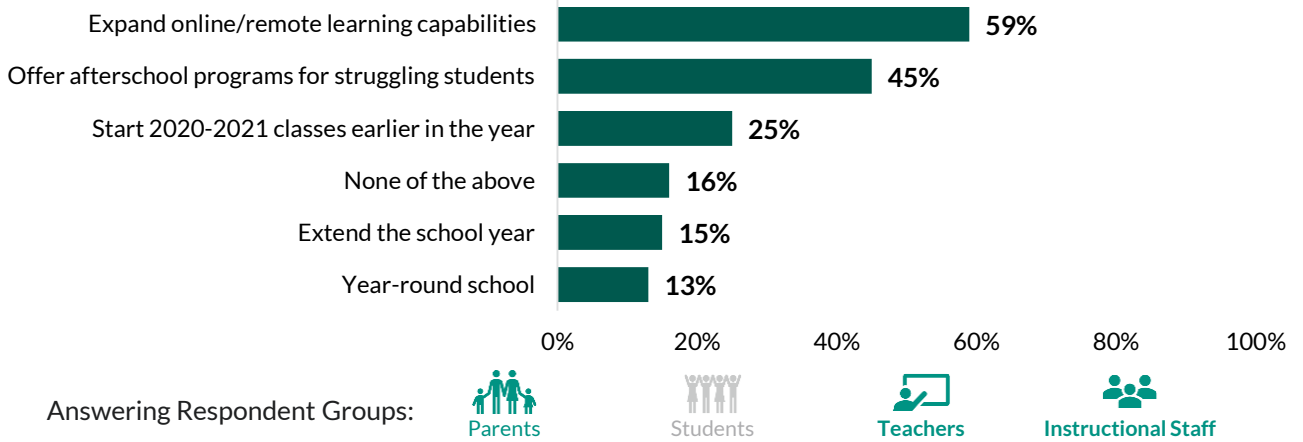
Future Needs and Outcomes

Question: Which of the following do you expect your child will need to do as a result of school closures? (parents)



Future Needs and Outcomes (continued)

Question: In light of COVID-19 related school closures, which of the following would you like your [child's] school to consider? (parents, teachers, instructional staff)



Question: Which of the following would be most useful for the district to offer staff to improve distance learning in the future? Please select up to five. (teachers and instructional staff)

